

Tolerances single and double rail

Franke GmbH
 Obere Bahnstrasse 64
 73431 Aalen
 Germany
 www.franke-gmbh.de

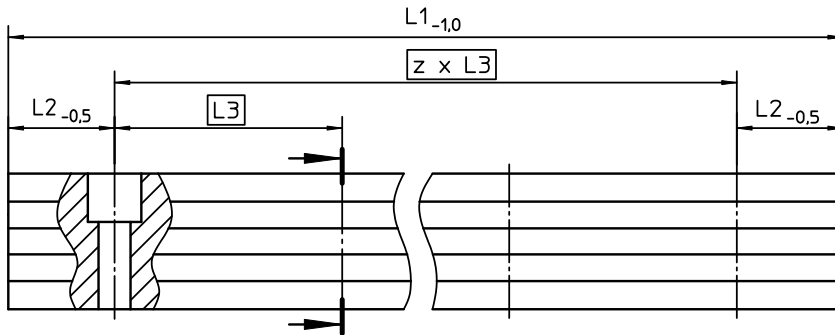
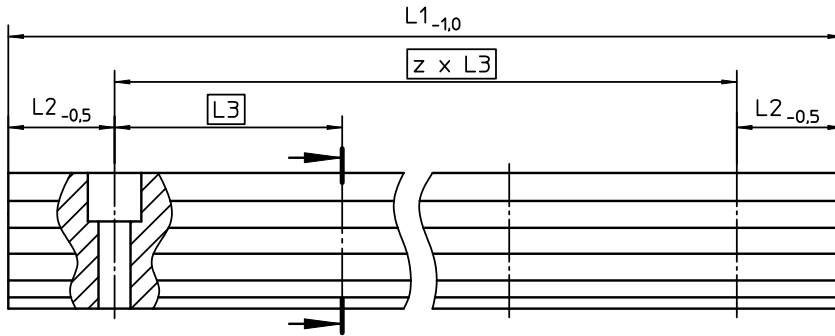


FD1

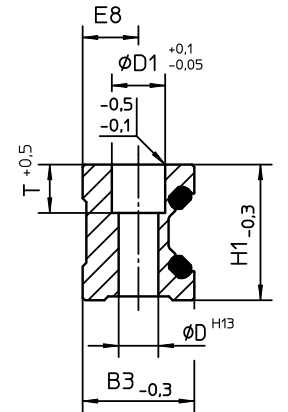
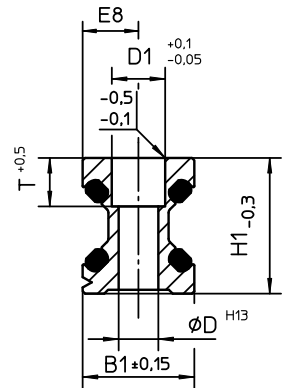
FN59099

Page 1 of 2

FDA12E - FDA45D centered bored



$\oplus \ominus \phi 0,4$ all bores



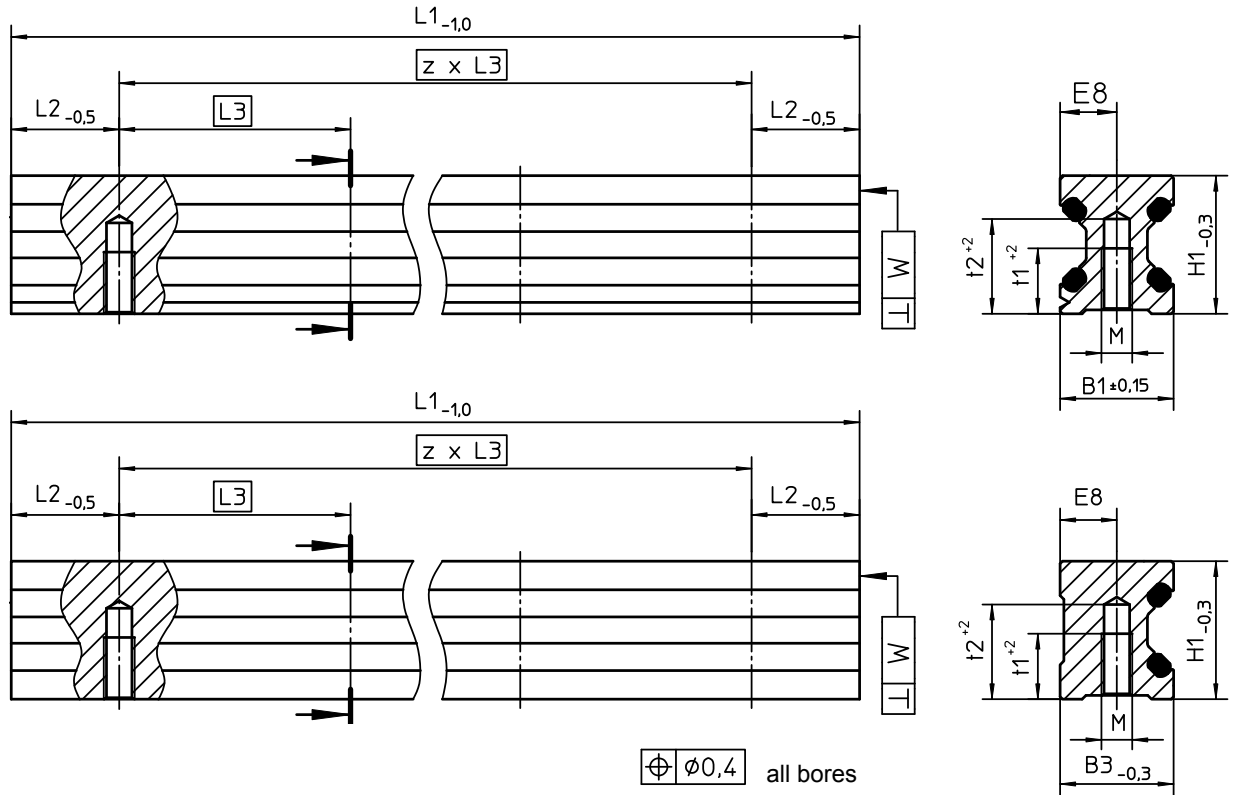
z = number of equivalent bore distances

Rail	Standard LowCost	[mm]	FDA12E	FDA15E	FDA20E	FDA25E	FDA35E	FDA45E	FDA12D	FDA15D	FDA20D	FDA25D	FDA35D	FDA45D
			FDB12E							FDB12D				
D H13			3,4 ^{+0,18}	4,5 ^{+0,18}	5,5 ^{+0,18}	6,6 ^{+0,22}	9,0 ^{+0,22}	11,0 ^{+0,27}	3,4 ^{+0,18}	4,5 ^{+0,18}	5,5 ^{+0,18}	6,6 ^{+0,22}	9,0 ^{+0,22}	11,0 ^{+0,27}
D1 ^{+0,10} _{-0,05}			6,0	8,0	10,0	11,0	15,0	18,0	6,0	8,0	10,0	11,0	15,0	18,0
T ^{+0,5}			5,5	6,0	8,0	10,0	11,5	14,5	5,5	6,0	8,0	10,0	11,5	14,5
H1 _{-0,3}			14,7	18,7	22,6	27,0	37,0	46,0	14,7	18,7	22,6	27,0	37,0	46,0
L3			40	60	60	60	80	105	40	60	60	60	80	105
B1 / B3			12,00	15,25	20,00	25,00	35,00	45,00	12,00	15,50	21,00	23,00	32,00	45,00
E8			5,50	7,00	9,5	12,00	17,00	22,00	6,00	7,75	10,5	11,50	16,00	22,50
Material			EN AW-6005 T6											

09.12.09
 13.01.09
 21.02.08
 01.08.06
 12.04.05
 19.10.04
 28.08.04
 Ersetzt FN 59099-01



FDA12E - FDA45D centered bored (with thread boring)



z = number of equivalent bore distances

Rail	Standard LowCost	FDA12E	FDA15E	FDA20E	FDA25E	FDA35E	FDA45E	FDA12D	FDA15D	FDA20D	FDA25D	FDA35D	FDA45D
		FDB12E						FDB12D					
M (thread)		M3	M4	M5	M6	M8	M10	M3	M4	M5	M6	M8	M10
t1 ⁺²	[mm]	7,0	10,0	12,0	14,0	19,0	24,0	7,0	10,0	12,0	14,0	19,0	24,0
t2 ⁺²		10,0	14,0	16,0	19,0	26,0	32,0	10,0	14,0	16,0	19,0	26,0	32,0
H1 _{-0,3}		14,7	18,7	22,6	27,0	37,0	46,0	14,7	18,7	22,6	27,0	37,0	46,0
L3		40	60	60	60	80	105	40	60	60	60	80	105
B1 / B3		12,00	15,25	20,00	25,00	35,00	45,00	12,00	15,50	21,00	23,00	32,00	45,00
E8		5,50	7,00	9,50	12,00	17,00	22,00	6,00	7,75	10,50	11,50	16,00	22,50
Material		EN AW-6005 T6											

09.12.09
 13.01.09
 21.02.08
 01.08.06
 19.10.04
 26.08.04
 Ersetzt 52631
 Letzte Änderung